

DATES AND COST

THE CSA SESSION IS SCHEDULED TO BEGIN THE THIRD WEEK OF MAY AND RUN FOR 24 WEEKS UNTIL THE END OF OCTOBER.

EARLY REGISTRATION BEFORE DECEMBER 31, 2010: \$528

REGISTRATION AFTER DECEMBER 31, 2010: \$600



TO SIGN UP FOR THE 2011 CSA SESSION, PLEASE FILL OUT AND RETURN THE FORM BELOW WITH YOUR PAYMENT TO:
12403 PLEASANT LAKE COURT
RICHMOND, VA 23233

NAME:

ADDRESS:

PHONE NUMBER:

E-MAIL ADDRESSES OF ALL PARTICIPATING MEMBERS:

PICK-UP LOCATION:

_____ COZZOLI'S IN SHORT PUMP ON
_____ WEDNESDAYS FROM 12PM-9PM

_____ ROCKVILLE MARKET ON
_____ WEDNESDAYS FROM 1PM-8PM

_____ GOOCHLAND FARMERS MARKET ON
_____ SATURDAYS FROM 8AM-12PM

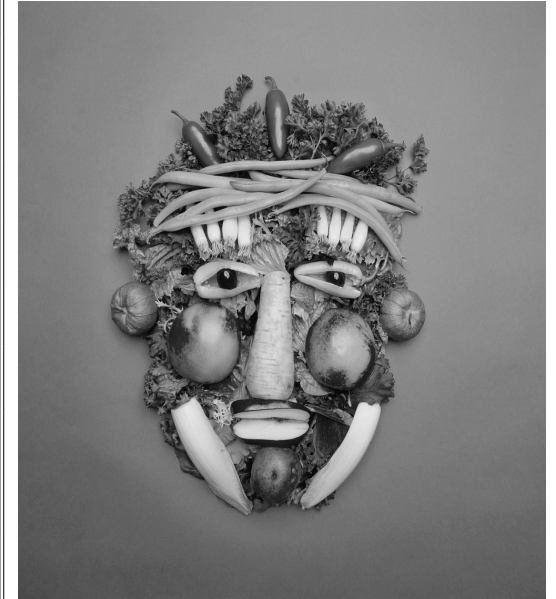
I UNDERSTAND THE RISKS AND REWARDS INVOLVED IN PARTICIPATING IN A CSA PROGRAM. I ALSO UNDERSTAND IT IS MY RESPONSIBILITY TO PICK UP MY PRODUCE EACH WEEK AT MY SPECIFIED PICK-UP LOCATION.

X _____

DATE _____

ROOTS AND FEATHERS FARM
MANAKIN-SABOT, VA

COMMUNITY SUPPORTED AGRICULTURE 2011



Chemical-free Vegetables and Fruits
from our Farm to your Table

ROOTS AND FEATHERS FARM CSA 2011

WHAT IS A CSA?

CSA stands for Community Supported Agriculture. As a method for getting fresh produce from farms to the local community, it helps small farmers stay on the land by giving them a certain income for the year. The shareholder receives a portion of the farm's bounty each week, while the farmer receives capital to get the farm running each year.

Our customers purchase a "share" in the farm at the beginning of the season, and receive a box of produce each week for the duration of the session. While the shareholders assume the risk of drought, flood, wind, frost, pests and disease with the farmer, they typically receive a full box at a great value each week. 2010 was an unusually hot and dry year, however our boxes always managed to stay full!

WHAT TO EXPECT

- ◆ 1/2 to 3/4 bushel box of produce each week containing 7-10 different vegetables, fruits and herbs. We grow many heirlooms and unique vegetables using organic practices only. The box feeds a family of 2-4 people.
- ◆ a weekly e-mail listing the contents of the box, a farm update, and cooking and preservation suggestions.

2011 CROP PLAN

- | | | |
|--------------------|-------------|--------------------------------------|
| • Arugula | • Herbs | • Spinach |
| • Beans | • Kale | • Squash—
Summer
and Winter |
| • Bok Choy | • Kohlrabi | • Strawber-
ries *New
crop |
| • Broccoli | • Lettuce | • Sweet
Potatoes
*New crop |
| • Broccoli
Raab | • Melons | • Tat Soil |
| • Cabbage | • Mustard | • Tomatoes |
| • Carrots | • Okra | • Turnips |
| • Cauliflower | • Onions | • Shiitake
Mushrooms
*New crop |
| • Chard | • Peas | |
| • Collards | • Peppers | |
| • Cucumbers | • Potatoes | |
| • Edamame | • Radish | |
| | • Rutabegas | |

THE WEEKLY PICK-UP

It is the responsibility of the shareholder to select a pick up location they can make it to each week to pick up their share of vegetables. We are unable to make special arrangements or change pick up locations for travel, forgetting, etc. We recommend having a friend pick up your share if you are unable to make it. Any shares remaining after the pick up will be donated. The shareholder will pick up their box at the same location each week.

It is our responsibility as the farmers to grow the produce to the best of our ability, deliver it to the pick up locations each week and communicate to the shareholder about the box contents.

ABOUT THE FARM

ROOTS AND FEATHERS FARM WAS FOUNDED IN 2010 ON THE ROLLING HILLS OF BEAUTIFUL GOOCHLAND COUNTY BY TWO YOUNG FARMERS NOW IN THEIR 7TH YEAR OF FARMING. WE STRIVE TO GROW HIGH QUALITY, CHEMICAL FREE FRUITS AND VEGETABLES USING INPUTS SOURCED AS CLOSE TO US AS POSSIBLE. IN ADDITION TO RUNNING OUR CSA PROGRAM, WE SELL AT THE GOOCHLAND FARMERS MARKET AND THROUGH FALL LINE FARMS AND LOCAL ROOTS CO-OPS.

CONTACT INFO
RITA BACHMANN
VEGITUPROOTS@GMAIL.COM
314-856-3576